



OPTIMAL®

Your profit



Unacceptable:

Illegible barcode:

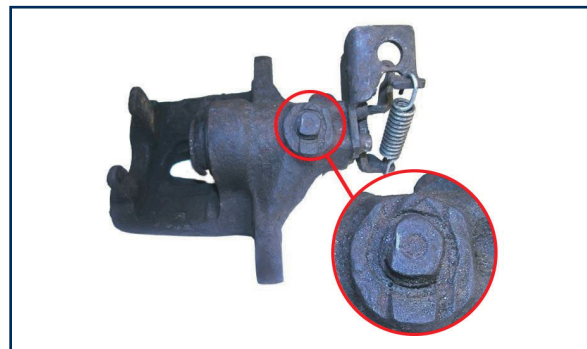


The original barcode on the box must not be covered in any way. The brake calipers will be rejected if the barcode cannot be read by a scanner.

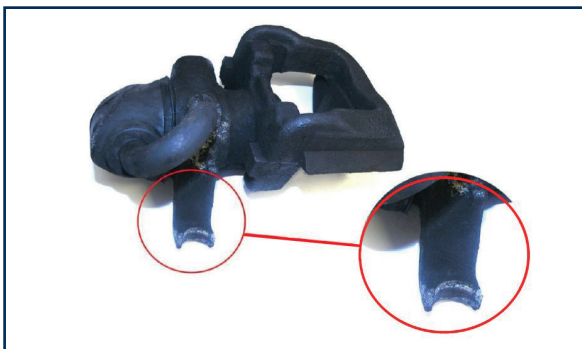
Severe damage/unauthorised repairs:



Damage or defects on the plug connector or motor for the electric hand brake.



In this example, a bolt has been used. The thread is defective and toolmarks are visible.



In this example, the guide for the handbrake cable has broken off.



OPTIMAL®
Your profit

OPTIMAL Automotive GmbH
Alfred-Kühne-Straße 3
85416 Langenbach / Germany
Munich Airport Logistics Park

Tel.: +49 (0) 8761 72 06 - 0
Fax: +49 (0) 8761 72 06 - 121
www.optimal-germany.com
info@optimal-germany.com





OPTIMAL®

Your profit



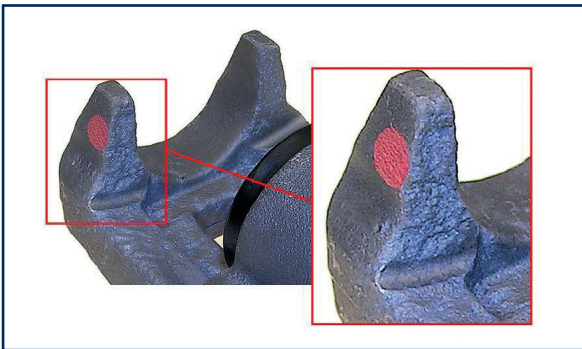
Corrosion:



Corrosion damage on the surface of the connection for the guide pin.



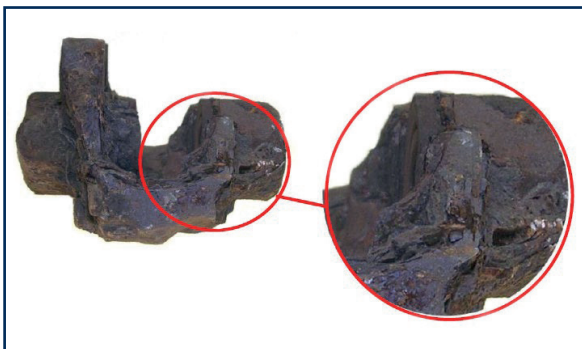
The inner cylindrical part has been corroded and is broken.



In this example, the plane-parallel contact surface for the brake pads is extremely corroded. The brake caliper can no longer be remanufactured.



Severe corrosion/rust damage on the entire housing. The corrosion/rust damage must not be so severe that the surfaces have virtually eroded away and can no longer be reconditioned.



In this example, the surface is so severely rusted/damaged that it has been completely eroded away. The corrosion/rust damage must not be so severe that the surfaces have virtually eroded away and can no longer be reconditioned.



Examples of severe corrosion/rust damage on the entire housing, i.e. on the pin holes or surfaces for the brake pads. The corrosion/rust damage must not be so severe that the surfaces have virtually eroded away and can no longer be reconditioned.



OPTIMAL®
Your profit

OPTIMAL Automotive GmbH
Alfred-Kühne-Straße 3
85416 Langenbach / Germany
Munich Airport Logistics Park

Tel.: +49 (0) 8761 72 06 - 0
Fax: +49 (0) 8761 72 06 - 121
www.optimal-germany.com
info@optimal-germany.com





OPTIMAL®

Your profit



Damaged housing:



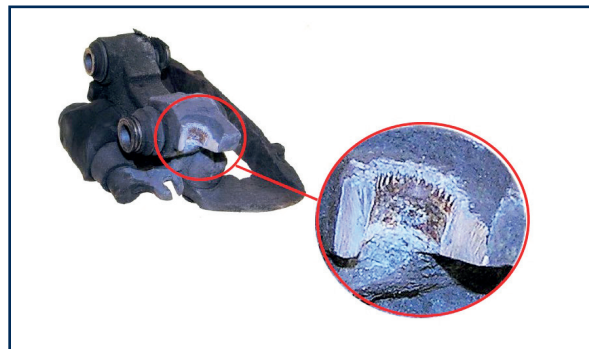
In this example, part of the brake caliper housing has been broken off and cannot be reconditioned.



In this example, the guide sleeve housing has been destroyed.



In this example, the opening for the fixing pin has been broken off/destroyed.



In this example, the guide/mounting for the handbrake cable on the brake caliper housing has been destroyed.



In this example, part of the brake caliper housing has been destroyed in the area of the guide sleeve.



In this example, saw marks are visible on the brake caliper housing.



OPTIMAL®
Your profit

OPTIMAL Automotive GmbH
Alfred-Kühne-Straße 3
85416 Langenbach / Germany
Munich Airport Logistics Park

Tel.: +49 (0) 8761 72 06 - 0
Fax: +49 (0) 8761 72 06 - 121
www.optimal-germany.com
info@optimal-germany.com





OPTIMAL®

Your profit



In this example, saw marks are visible on the brake caliper housing.



In this example, the guide sleeve housing has been destroyed.



In this example, the opening for the fixing pin has been broken off/destroyed.



In this example, the sliding surface for the brake pads has been destroyed.

Incomplete/taken apart:



In this example, the brake caliper is incomplete and parts of the frame are missing.



In this example, the brake caliper is incomplete and parts of the frame are missing.

This list only includes the most common reasons for the rejection of used brake calipers and is not exhaustive. OPTIMAL reserves the right to inspect all brake calipers submitted and to reject any parts which cannot be overhauled and reconditioned.



OPTIMAL®
Your profit

OPTIMAL Automotive GmbH
Alfred-Kühne-Straße 3
85416 Langenbach / Germany
Munich Airport Logistics Park

Tel.: +49 (0) 8761 72 06 - 0
Fax: +49 (0) 8761 72 06 - 121
www.optimal-germany.com
info@optimal-germany.com

